

KAPLAN INTERNATIONAL LANGUAGES

## BOURNEMOUTH

## WHY CHOOSE TO STUDY IN OUR BOURNEMOUTH SCHOOL?

## 5 reasons to study here

- Currently the biggest Kaplan school in the UK and Ireland
- Offers all English levels from Beginner to Advanced
- Exam Preparation Academy specializing in IELTS preparation
- Excellent record for preparing students for university
- Discover the natural wonders of the nearby New Forest and Jurassic Coast

## Location and contact information

ADDRESS:	130-136 Poole Road, Bournemouth, BH4 9EF
PHONE:	+44 (0)12 0275 2200
FAX:	+44 (0)12 0275 1749
EMERGENCY CONTACT:	+44 (0)78 0257 7802
AT THIS ADDRESS SINCE:	1980
PROVIDING ENGLISH COURSES SINCE:	1967



## School information

PRINCIPAL:	Begona Gonzalez
TOTAL NUMBER OF TEACHERS:	11-16 (Full time teachers: 11-16)
LANGUAGES SPOKEN BY STAFF:	Greek, Italian, Japanese, Portuguese, Spanish
TEACHER QUALIFICATIONS:	All teachers have a level of education normally represented by a degree and they also have a CELTA or equivalent qualification. Some also hold the higher level DELTA qualification, PGCE, or MA in applied linguistics

## Accreditations and memberships

Accredited by the  
**BRITISH COUNCIL**  
for the teaching  
of English in the UK



## Is this school an exam center?

No, it is not an exam center

# ABOUT THE SCHOOL

NUMBER OF BUILDINGS:	1
NUMBER OF FLOORS:	3
TOTAL NUMBER OF CLASSROOMS:	17 (Classrooms without windows: 0)
SCHOOL FACILITIES:	Air conditioning, heating, Wi-Fi (free), SIM cards to buy, top up SIM cards, computer lab/multimedia center, self study center, garden, prayer room, games room, student lounge/ common room
WHEELCHAIR / DISABLED ACCESS:	No
EXTRA COST OF FACILITIES:	No
OTHER SERVICES PROVIDED:	Visa support, airport transfer, UPS (University Placement Service)
EXTRA COST OF OTHER SERVICES:	Airport transfers: £145 Heathrow, £155 Gatwick, £55 Bournemouth Airport, £200 Luton, £220 Stansted, £90 Southampton airport
NUMBER OF COMPUTERS AVAILABLE:	18
LEVELS OF ENGLISH OFFERED:	Beginner (depending on availability), Elementary, Lower Intermediate, Intermediate, Higher Intermediate, Advanced
FIRST DAY AT SCHOOL:	Orientation starts every Monday at 8:15. This includes registration, a placement test, general information about the school and accommodation, a tour of the school and the facilities, and the distribution of class timetables. Classes start every Tuesday. On their first day, students are expected to bring their passport, some paper, and a pen.



## SAMPLE CLASS TIMETABLE

### Morning

CLASS:	08:30 - 10:00" During high season classes will start at 08:15
BREAK:	10:00 - 10:15
CLASS:	10:15 - 11:45

### Afternoon

CLASS:	13:45 - 15:15
BREAK:	15:15 - 15:30
CLASS:	15:30 - 17:00 *During high season classes will finish at 18:00

## SAMPLE SPECIFIC SKILLS CLASS TIMETABLE

### Morning class

(Monday to Friday)

12:00 - 13.30 (winter season)

### Afternoon class

(Monday to Friday)

13:30 - 14:30 (summer season)

## SCHOOL MATERIALS

MATERIALS PROVIDED FOR STUDENTS:

K+ Course Books, K+ Learning Clubs, K+ Online, K+ Online Extra, Chromebooks, interactive whiteboards

IS THERE A BOOK DEPOSIT?

No

IS THERE A MATERIALS FEE?

No





## Courses and students

### COURSES PROVIDED AT THIS SCHOOL:

General English, Semi-Intensive English, Intensive English, Academic Year, Academic Semester, Business Supplementary, IELTS Exam Preparation

### SPECIAL / EXTRA COURSES PROVIDED:

N/A

### AVERAGE NUMBER OF STUDENTS PER CLASS:

11-15

### MINIMUM AGE OF STUDENTS:

16

### AVERAGE AGE OF STUDENTS:

22-25

### STUDENTS PER AGE GROUP:

18-21: 28% / 22-25: 30% / 26-30: 25% / Over 30: 17%

### TOP 10 STUDENT NATIONALITIES:

Saudi Arabia, Turkey, China, Italy, Spain, South Korea, Oman, France, Colombia, Germany

## School location and transport

	By foot	By bike	By bus	By subway/train
Time to the nearest café / restaurant:	2 minutes	N/A	N/A	N/A
Time to the nearest supermarket:	3 minutes	N/A	N/A	N/A
Time to the nearest post office:	5 minutes	N/A	N/A	N/A
Time to the nearest ATM / bank:	1 minute	N/A	N/A	N/A
Time to the nearest sports center:	15 minutes	N/A	N/A	N/A
Time to the nearest hospital:	50 minutes	30 minutes	35 minutes	N/A
Time to the city center:	15 minutes	5 minutes	5 minutes	N/A



### AIRPORT TRANSPORT

#### CLOSEST AIRPORT:

Bournemouth International Airport or London Heathrow International Airport

	Line or Number	Cost	Duration
Airport to city center by bus:	National Express coach	£20-30	3 hours
Airport to city center by train:	London-Poole	£65	2 hours
International train station to city center:	N/A	N/A	N/A

# ABOUT BOURNEMOUTH

NAME OF LOCATION:	Bournemouth
FAMOUS LANDMARKS:	Bournemouth Pier, Russell Cotes Museum
CUISINES WITHIN A 20-MINUTE WALK:	British, Chinese, European, French, Greek, Indian, Italian, Japanese, Middle Eastern, Spanish, Thai, Turkish, Vegetarian
TRANSPORT WITHIN A 10-MINUTE WALK:	Buses
TOP 5 REASONS TO CHOOSE THIS CITY:	Best weather in the UK, friendly local people, safe atmosphere, stunning countryside, lively town all year around
WHAT MAKES THIS CITY UNIQUE?	12 miles of beach, amazing landmarks
ALTERNATIVE THINGS TO DO:	Go surfing, take part in some exciting beach sports like volleyball, go climbing in the surrounding nature
CITY PERSONALITY:	Active nightlife, bike-friendly, charming, cultural, friendly, green, natural landscape, small town experience, traditional, university town

## Examples of nearby cities to visit

SALISBURY	Travel time: 60 minutes, price of return ticket: £20
LONDON	Travel time: 2.5 hours, price of return ticket: £30

## Regular social activities

TABLE TENNIS TOURNAMENT	Free
KAPLAN INTERNATIONAL PARTY	£3
VOLLEYBALL	£5
KARAOKE	Free
FILM NIGHT	Free
HALF-DAY TRIP TO CHRISTCHURCH	£15
FULL DAY TRIP TO LONDON	£35

## Typical 2-week social schedule

Days	First week	Second week
MON	Lunch with new students	Lunch with new students
TUE	Welcome drinks	Indoor volleyball
WED	Bowling	Winchester trip
THU	Ice skating	Visit to Corfe Castle
FRI	Football	Football
SAT	Trip to nearby UK city	Trip to other UK city

Number of Social activities per week: 7

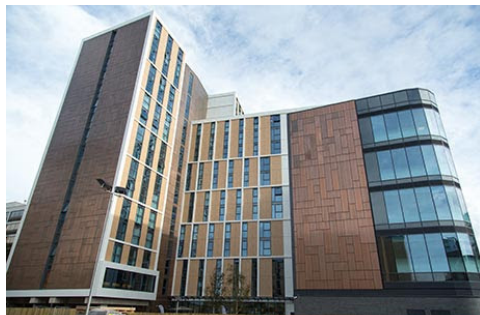


## LIVING COST (SAMPLE PRICES FOR ITEMS IN THIS CITY)

- Bottle of water: £1
- Meal out for two: £25
- Local bus ticket: £10/week
- Cinema ticket: £12
- Coffee: £2
- Takeaway pizza: £12
- Local train ticket: N/A
- Can of coke: £1
- Sandwich: £3
- Bike rental: £16/day

# ACCOMMODATION IN BOURNEMOUTH

## LANSDOWNE POINT



ADDRESS:	65 Holdenhurst Road, Bournemouth BH8 8EP
WEBSITE:	N/A
ACCOMMODATION TYPE:	Student halls, 5-bedroom apartment, single room(s), en-suite bathroom(s), private kitchen for the apartment, lounge/common area for the apartment, TV in residence common areas
SERVICES AVAILABLE:	Laundry (extra charge), Wi-Fi, linen, cleaning service, toiletries (not provided)
EXTRA COST OF SERVICES:	Laundry: £5 wash and dry
BEDROOM:	Wardrobe/closet, desk, lamp, chair, double bed for single use
KITCHEN:	Pots & pans, cooking utensils, cutlery & crockery, microwave, oven, stovetop, toaster, kettle, fridge, freezer, iron and ironing board can be requested from the front desk
FACILITIES:	Cafeteria, outdoor space, picnic area, coin-operated laundry facilities
EXTRA COST OF FACILITIES:	N/A
FAMOUS LANDMARKS NEARBY:	Town center, Bournemouth beach, pier and main gardens
VISITORS OR GUESTS ALLOWED?	No
NOISE RESTRICTIONS?	Yes (From 23:00 every day)
SMOKING ALLOWED IN THE RESIDENCE?	No
24-HOUR SECURITY?	Yes
ROOM CLEANING:	Cleaned on arrival, then every other week. Common areas cleaned weekly
LINEN CHANGING	Linen changed on arrival, then every other week
AVAILABILITY:	For students 16+
MINIMUM NUMBER OF WEEKS?	No minimum
CHECK-IN AND CHECK-OUT TIMES:	Check-in: 14:00 / Check-out: 10:00
ROOM DEPOSIT?	No - Card details taken on arrival and charged only when damage occurs

	By foot	By bike	By bus	By subway/train
Time to the school (Bournemouth):	40 minutes	15 minutes	20 minutes	N/A
Time to the nearest café / restaurant:	On-site	N/A	N/A	N/A
Time to the nearest supermarket:	1 minute	N/A	N/A	N/A
Time to the nearest post office:	10 minutes	2 minutes	N/A	N/A
Time to the nearest ATM / bank:	1 minute	N/A	N/A	N/A
Time to the nearest sports center:	5 minutes	N/A	N/A	N/A
Time to the nearest hospital:	50 minutes	20 minutes	30 minutes	N/A
Time to the city center:	1 minute	N/A	N/A	N/A
Time to the main airport:	N/A	N/A	2.5 hours	2 hours



# HOST FAMILY INFORMATION



THINGS STUDENTS NEED TO BRING:

SERVICES INCLUDED:

EXTRA COST OF SERVICES:

MEALS PROVIDED:

Toiletries

Bed linen, towels, laundry once a week (free of charge), Wi-Fi (free)

No

Yes (Breakfast and Dinner)

- **BREAKFAST:** Breakfast is usually a light meal consisting of cereal, fruit, toast, juice, or coffee. Hosts will usually ask you to prepare your own breakfast.
- **LUNCH:** You will be responsible for buying your own lunch at school, from a local restaurant, or the local shops.
- **DINNER:** You will usually eat dinner with your host, or occasionally you may prepare your own meal with food supplied by your host.

WILL THE HOMESTAY ARRANGE TO PICK UP THE STUDENT FROM THE AIRPORT?

TRANSPORT TO SCHOOL:

WHERE ARE THE HOST FAMILIES LOCATED?

ADDITIONAL INFORMATION:

No

Your host will help you to find your way to and from school on your first day and will show you how to use public transport.

Charminster, Branksome, Poole, Wallisdown

Homestays are 25–35 minutes of commute time to the school