

KAPLAN INTERNATIONAL LANGUAGES CAMBRIDGE

WHY CHOOSE TO STUDY IN OUR CAMBRIDGE SCHOOL?

5 reasons to study here

- Offers a peaceful study environment in a beautiful academic city
- Study in the same city as Stephen Hawking, Sir Isaac Newton, and Sir Ian McKellen
- Located 10 minutes from the city center with easy access to London
- Boasts a private garden where BBQs are held during the summer season
- Free bike hire available to all Academic Year and Academic Semester students

Location and contact information

ADDRESS:	75 Barton Road, Cambridge, CB3 9LG
PHONE:	+44 (0)12 23357702
FAX:	N/A
EMERGENCY CONTACT:	+44 (0)77 7063 8637
AT THIS ADDRESS SINCE:	2002
PROVIDING ENGLISH COURSES SINCE:	1976



School information

PRINCIPAL:	Joanna Chung
TOTAL NUMBER OF TEACHERS:	11-15
LANGUAGES SPOKEN BY STAFF:	French, Spanish, Italian, Polish, Slovenian, Czech, Portuguese, Dutch
TEACHER QUALIFICATIONS:	All teachers have a level of education normally represented by a degree and they also have a CELTA or equivalent qualification. Some also hold the higher level DELTA qualification, PGCE, or MA in applied linguistics

Accreditations and memberships



Is this school an exam center?

No, it is not an exam center

ABOUT THE SCHOOL

NUMBER OF BUILDINGS:	1
NUMBER OF FLOORS:	2
TOTAL NUMBER OF CLASSROOMS:	8 (Classrooms without windows: 0)
SCHOOL FACILITIES:	Air conditioning (in all the classrooms), heating, Wi-Fi (free), free SIM cards, top up SIM cards, self study center, cafeteria (hot meals available), garden, prayer room
WHEELCHAIR / DISABLED ACCESS:	No
EXTRA COST OF FACILITIES:	Café prices range from £1–6
OTHER SERVICES PROVIDED:	Visa support, travel support, airport transfer, UPS (University Placement Service)
EXTRA COST OF OTHER SERVICES:	Airport transfer: £95–195 for London airports
NUMBER OF COMPUTERS AVAILABLE:	30
LEVELS OF ENGLISH OFFERED:	Elementary, Lower Intermediate, Intermediate, Higher Intermediate, Advanced
FIRST DAY AT SCHOOL:	Orientation starts every Monday at 09:00. This includes a placement test, school induction presentation, and a walking tour of Cambridge. The day ends with an welcome evening at 19:30. On their first day, students are expected to bring their passport, a pen, some paper, and money for lunch.



SAMPLE CLASS TIMETABLE

Morning

CLASS:	09:10 - 10:40
BREAK:	10:40 - 10:50
CLASS:	10:50 - 12:20

Afternoon

CLASS:	14:10 - 15:40
BREAK:	15:40 - 15:50
CLASS:	15:50 - 17:20

SAMPLE SPECIFIC SKILLS CLASS TIMETABLE

Morning class 12:30 - 14:00

Afternoon class

SCHOOL MATERIALS

MATERIALS PROVIDED FOR STUDENTS:

K+ Course Books, K+ Learning Clubs, K+ Online, K+ Online Extra, Chromebooks, Interactive whiteboards, computer in class

IS THERE A BOOK DEPOSIT?

No

IS THERE A MATERIALS FEE?

No



Courses and students

COURSES PROVIDED AT THIS SCHOOL:

General English, Semi-Intensive English, Intensive English, Academic Year, Academic Semester, IELTS Exam Preparation, Cambridge Exam Preparation (CAE & FCE), Business English

SPECIAL / EXTRA COURSES PROVIDED:

Bespoke individual courses upon application

AVERAGE NUMBER OF STUDENTS PER CLASS:

11-15

MINIMUM AGE OF STUDENTS:

16 (12 if in a closed group)

AVERAGE AGE OF STUDENTS:

22-25

STUDENTS PER AGE GROUP:

18-21: 36% / 22-25: 38% / 26-30: 10% / Over 30: 16%

TOP 10 STUDENT NATIONALITIES:

Saudi Arabia, China, Italy, Oman, Turkey, South Korea, Japan, Thailand, Brazil, Chile

School location and transport

	By foot	By bike	By bus	By subway/train
Time to the nearest café / restaurant:	20 minutes	10 minutes	15 minutes	N/A
Time to the nearest supermarket:	10 minutes	5 minutes	N/A	N/A
Time to the nearest post office:	10 minutes	5 minutes	N/A	N/A
Time to the nearest ATM / bank:	10 minutes	5 minutes	N/A	N/A
Time to the nearest sports centre:	20 minutes	10 minutes	15 minutes	N/A
Time to the nearest hospital:	N/A	25 minutes	40 minutes	N/A
Time to the city center:	20 minutes	10 minutes	15 minutes	N/A



AIRPORT TRANSPORT

CLOSEST AIRPORT: London Stansted Airport

	Line or Number	Cost	Duration
Airport to city center by bus:	National Express coach	£8-15	45 minutes
Airport to city center by train:	London Stansted to Cambridge	£8-20	35 minutes
International train station to city center:	Kings Cross to Cambridge	£25-45	45 minutes

ABOUT CAMBRIDGE

NAME OF LOCATION:	Cambridge
FAMOUS LANDMARKS:	Kings College Cambridge University, Fitzwilliam Museum, St John's College Cambridge, the River Cam
CUISINES WITHIN A 20-MINUTE WALK:	American, British, Chinese, European, Indian, Italian, Japanese, Spanish, Thai, Turkish, Vegetarian
TRANSPORT WITHIN A 10-MINUTE WALK:	Buses
TOP 5 REASONS TO CHOOSE THIS CITY:	City of academic excellence, wonderful parks and green spaces, 800 years of history from Cambridge University, 50-minute train journey from London, access to Cambridge University talks
WHAT MAKES THIS CITY UNIQUE?	Multi cultural community, student friendly, heart of education, one of the most famous universities in the world
ALTERNATIVE THINGS TO DO:	Go punting on the River Cam, enjoy afternoon tea in Grantchester in the Orchard Tea Rooms where Virginia Woolf used to write, take a bike ride to local villages, watch the end of year Cambridge University Ball Fireworks from the river
CITY PERSONALITY:	Academic, architecture, bike-friendly, bookstores, boutiques, cultural, famous, green, historical, iconic landmarks, museums, picturesque, popular, small town experience, traditional, university town, vibrant, youthful

Examples of nearby cities to visit

LONDON	Travel time: 60 minutes, price of return ticket: £16-42
OXFORD	Travel time: 3 hours, price of return ticket: £41- 93

Regular social activities

VISIT TO KINGS COLLEGE	£6
PUNTING ON THE RIVER CAM	£20
FITZWILLIAM MUSEUM	Free
PLAYING FOOTBALL	Free
ST MARY'S TOWER OBSERVATION PLATFORM	£5
BOTANICAL GARDENS	£5.50
GRANTCHESTER TEA ROOMS	£15 - £20 for a cream tea



Typical 2-week social schedule

Days	First week	Second week
MON	Walking Tour	Welcome Night
TUE	Bowling	Pool
WED	Cinema	Show in London
THU	Punting on the River Cam	Club night
FRI	Kings college	Paris weekend trip
SAT	Brighton	Bath / Stonehenge

Number of Social activities per week: 6-8

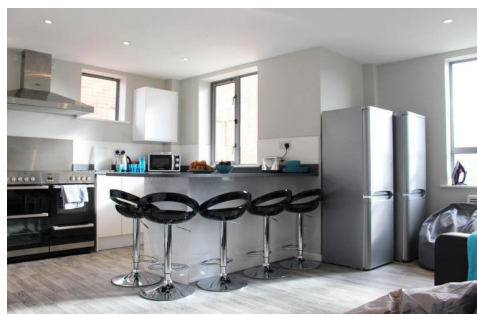


LIVING COST (SAMPLE PRICES FOR ITEMS IN THIS CITY)

- Bottle of water: £1
- Meal out for two: £30
- Local bus ticket: £15/week
- Cinema ticket: £9.50 +
- Coffee: £2-3
- Takeaway pizza: £12
- Local train ticket: £6-42
- Can of coke: £1
- Sandwich: £6
- Bike rental: from £25

ACCOMMODATION IN CAMBRIDGE

TRIPOS COURT



ADDRESS:	Homerton Street, Cambridge, CB2 8NX
WEBSITE:	N/A
ACCOMMODATION TYPE:	Single room(s), en-suite bathroom(s), private kitchen for the apartment
SERVICES AVAILABLE:	Laundry (extra charge), Wi-Fi, cleaning service, linen (towels not included)
EXTRA COST OF SERVICES:	Laundry: £6 wash and dry
BEDROOM:	Wardrobe/ closet, desk, lamp, chair, safe
KITCHEN:	Pots & pans, cooking utensils, cutlery & crockery, microwave, oven, stove top, toaster, kettle, fridge, freezer, iron and ironing board
FACILITIES:	Coin-operated laundry facilities, bike room
EXTRA COST OF FACILITIES:	Laundry: £6 wash and dry
FAMOUS LANDMARKS NEARBY:	Parkers Piece, Mill Road, Fitzwilliam Museum
VISITORS OR GUESTS ALLOWED?	Yes, until 22:00
NOISE RESTRICTIONS?	Yes (From 23:00 every day)
SMOKING ALLOWED IN THE RESIDENCE?	No
24-HOUR SECURITY?	Yes
ROOM CLEANING:	Cleaned on arrival, common areas cleaned weekly
LINEN CHANGING:	Linen changed on arrival
AVAILABILITY:	For students 18+
MINIMUM NUMBER OF WEEKS?	No minimum
CHECK-IN AND CHECK-OUT TIMES:	Check-in: 14:00 / Check-out: 10:00
ROOM DEPOSIT?	No - Card details taken on arrival and charged only when damage occurs

	By foot	By bike	By bus	By subway/train
Time to the school (Cambridge):	35 minutes	15 minutes	30 minutes	N/A
Time to the nearest café / restaurant:	3 minutes	1 minute	N/A	N/A
Time to the nearest supermarket:	3 minutes	1 minute	N/A	N/A
Time to the nearest post office:	35 minutes	15 minutes	20 minutes	N/A
Time to the nearest ATM / bank:	3 minutes	1 minute	N/A	N/A
Time to the nearest sports center:	5 minutes	3 minutes	N/A	N/A
Time to the nearest hospital:	25 minutes	15 minutes	10 minutes	N/A
Time to the city center:	30 minutes	15 minutes	20 minutes	N/A
Time to the main airport:	N/A	N/A	2.5 hours (Heathrow), 70 minutes (Stansted)	3 hours (Heathrow), 30 minutes (Stansted)

ACCOMMODATION IN CAMBRIDGE

STUDY INN



ADDRESS:	Castle Park, Castle Street, Cambridge CB3 0SZ
WEBSITE:	https://www.studyinn.com/student-accommodation/cambridge/2
ACCOMMODATION TYPE:	Individual studio apartments, double bed(s) - each studio contains a bathroom with shower, kitchen area, lounge/study/dining area , TV in the common area, onsite gym, bike storage
SERVICES AVAILABLE:	Laundry (extra charge), Wi-Fi, cleaning service, linen (towels not included)
EXTRA COST OF SERVICES:	Laundry: £6 wash and dry
BEDROOM:	Wardrobe/ closet, desk, lamp, chair, ensuite bathroom with shower, sink & toilet
KITCHEN:	Private kitchenette with storage, hob, microwave, fridge and conventional oven and all pots, pans, cutlery and crockery
FACILITIES:	Gym, steam rooms, gaming lounge, pool tables, table tennis, outdoor space, additional study areas, laundry facilities
EXTRA COST OF FACILITIES:	No
FAMOUS LANDMARKS NEARBY:	Museum of Cambridge, Castle Mound, Bridge of Sighs, River Cam, Jesus Green
VISITORS OR GUESTS ALLOWED?	Yes - please follow residence guidelines
NOISE RESTRICTIONS?	Yes (From 23:00 every day)
SMOKING ALLOWED IN THE RESIDENCE?	No
24-HOUR SECURITY?	Yes
ROOM CLEANING:	Yes - included
LINEN CHANGING:	Yes - included
AVAILABILITY:	For students 18+
MINIMUM NUMBER OF WEEKS?	No minimum
CHECK-IN AND CHECK-OUT TIMES:	Check-in: 14:00 / Check-out: 10:00
ROOM DEPOSIT?	No - Card details taken on arrival and charged only when damage occurs

	By foot	By bike	By bus	By subway/train
Time to the school:	30 minutes	10 minutes	30 minutes	N/A
Time to the nearest café / restaurant:	2 minutes	N/A	N/A	N/A
Time to the nearest supermarket:	5 minutes	2 minutes	N/A	N/A
Time to the nearest post office:	10 minutes	2 minutes	5 minutes	N/A
Time to the nearest ATM / bank:	5 minutes	2 minutes	N/A	N/A
Time to the nearest sports center:	15 minutes	5 minutes	N/A	N/A
Time to the nearest hospital:	1 hour	20 minutes	40 minutes	N/A
Time to the city center:	15 minutes	5 minutes	10 minutes	N/A
Time to the main airport:	N/A	N/A	N/A	1 hour 20 minutes (Standsted)

HOST FAMILY INFORMATION



THINGS STUDENTS NEED TO BRING:

SERVICES INCLUDED:

EXTRA COST OF SERVICES:

MEALS PROVIDED:

Toiletries, personal items to make their room feel like home, prescription medication

Bed linen, laundry once a week (free of charge)

No

Yes

• BREAKFAST:	Breakfast is usually a light meal consisting of cereal, fruit, toast, juice, or coffee. Hosts will usually ask you to prepare your own breakfast.
• LUNCH:	You will be responsible for buying your own lunch at school, from a local restaurant, or the local shops.
• DINNER:	You will usually eat dinner with your host; you will not be able to prepare your own meals in the evenings.

WILL THE HOMESTAY ARRANGE TO PICK UP THE STUDENT FROM THE AIRPORT?

TRANSPORT TO SCHOOL:

WHERE ARE THE HOST FAMILIES LOCATED?

ADDITIONAL INFORMATION:

No

Your host will help you to find your way to and from school on your first day and will show you how to use public transport.

Cherry Hinton, Trumpington, Fen Ditton, Arbury, Cambourne

Homestays are up to 60 minutes of commute time (up to 30 minutes if cycling) to the school