

Accommodation London, UK 2020



Accommodation in London (Central & Hampstead)

Homestay

Our homestays are carefully selected and offer students the opportunity to learn more about British culture in a comfortable setting while studying English in London.

- Welcoming and friendly atmosphere
- Carefully selected by our Accommodation Officer and visited on a regular basis
- Choice of single rooms (or twin rooms if two students book for the same period) with bed and breakfast or half board
- All bed linen and towels provided
- The majority of homestay hosts will do the laundry once a week
- Good and reliable transport links
- Students don't have access to kitchen facilities
- Commute time from the London homestays to LSI London Hampstead or London Central by public transportation can be up to 60 minutes
- Prices for the public transport can vary from zone 1-2 with GBP134.80 per month to zone 1-5 with GBP230.40 per month
- Students which stay for 14 weeks or more can apply for a Student Oyster Card to get a discount of 30% on the prices
- Arrivals between 7:00 am and 11:00 pm on Saturdays or Sundays
*Saturday arrivals subject to availability at London Hampstead, please check with the school



Executive Homestay Option

Executive Homestays are often of a higher standard than other homestay accommodations. They are evaluated in terms of décor, size and location (although they are not necessarily closer to LSI). They have private bathroom facilities (en-suite or sole use of a bathroom outside the room) and extra facilities such as a television in the bedroom.

Homestay Prices

Homestay Weekly Rates (per person, per week)

Single room, B&B, zone 4-6	GBP155	Twin room*, B&B, zone 4-6	GBP130
Single room, Half Board, zone 4-6	GBP205	Twin room*, Half Board, zone 4-6	GBP170

Discount for 12+ weeks booked and paid for in advance: Single room GBP20 p/wk; Twin room GBP10 p/wk

Supplemental Rates (per person, per week)

Zone 2 Supplement	GBP50	Special Diets B&B/HB	GBP15/30
Zone 3 Supplement	GBP30	Executive Supplement**	GBP75
Summer Supplement (June 21 – August 30)	GBP30	Christmas Supplement	GBP45

Extra Night Rates (per person, per night)**

Single room, B&B, zone 4-6	GBP39	Twin room*, B&B, zone 4-6	GBP32
Single room, Half Board, zone 4-6	GBP50	Twin room*, Half Board, zone 4-6	GBP42
Single room, B&B, zone 3	GBP45	Twin room*, B&B, zone 3	GBP38
Single room, Half Board, zone 3	GBP58	Twin room*, Half Board, zone 3	GBP48
Single room, B&B, zone 2	GBP50	Twin room*, B&B, zone 2	GBP43
Single room, Half Board, zone 2	GBP63	Twin room*, Half Board, zone 2	GBP53

Executive Supplement	GBP20
----------------------	-------

Key

B&B = Bed and Breakfast (Breakfast only, no kitchen access); HB = Half Board (Breakfast and evening meals)

* For students booking together with the same arrival and departure dates.

** Subject to availability. Please check with the school before booking flight tickets.

*** Please note that during peak periods some of our homestay accommodations may be provided by a highly respected, British Council accredited agency that operates to the same high standards as LSI.

Residences & Flat share

These options are more suitable for independent students. All students must be 18 or older, unless otherwise noted. For the London railway (underground and overground) network, please click here: <http://content.tfl.gov.uk/london-rail-and-tube-services-map.pdf>
For information about the prices of weekly and monthly travel passes, please click here: <http://content.tfl.gov.uk/18-plus-student-fares-2020.pdf>

The Curve

Location: ZONE 1 – approx. 30 minutes to LSI London Central, approx. 40 minutes to London Hampstead by public transport – nearest station: Aldgate East (zone 1).

Minimum age: 18

Rooms: Single and double studios

Private Bathroom: Yes, shower room

Meals: Self-catering

Facilities: Free internet, fully equipped kitchens, sauna, games room, free gym on-site

Video: <https://www.youtube.com/watch?v=OWsbnYP6glQ&t>

Prices (per week per person): Single studio: From GBP340; Double studio: From GBP370

Availability: Year-round

Other: Bed linen provided, towels not provided, weekly cleaning for short term stays (less than 168 days), kitchen pack provided for studios.

LSI student placements managed by an external agency. Minimum stay 1 week.

Cancellation policy: Free cancellation up to 3 weeks before the arrival date.



Collective Old Oak

Location: ZONE 2 - approx. 40 minutes to LSI London Central - approx. 35 minutes to LSI London Hampstead by public transport. Nearest station: Willesden Junction (zone 2).

Minimum age: 18

Rooms: En-suite rooms

Private Bathroom: Yes (shower room)

Meals: Self-catering

Facilities: Free Wi-Fi, shared fully equipped kitchens, sauna, massage room, gym, games room, cinema, secret garden, library, bar and restaurant

Video: <https://www.youtube.com/watch?v=XkZbmXgOWOA>

Prices (per week per person): En-suite room: From GBP310

Availability: Year-round

Other: Bed linen provided, towels not provided, cleaning before checking in, kitchen pack provided. LSI student placements managed by an external agency. Minimum stay 1 week.

Cancellation policy: Free cancellation for 3 weeks before arrival.



AXO Camden

Location: Approx. 25 min to LSI London Central, approx. 30 to LSI London Hampstead by public transport. Nearest station: Kentish Town (zone 2)

Minimum age: 18

Rooms: Single studios

Private Bathroom: Yes

Meals: Self-catering

Facilities: Free Wi-Fi, communal area, launderette on-site, bicycle storage

Video: <https://www.youtube.com/watch?v=RoanXOIRbr8>

Prices (per week per person): Single studio: From GBP355

Availability: Year-round

Other: Bed linen provided, towels not provided, cleaning before checking in, weekly cleaning of the communal kitchens, kitchen pack provided. LSI student placements managed by an external agency. Minimum stay 1 week.

Cancellation policy: Free cancellation up to 3 weeks before the arrival date.



Residences & Flat share

Tufnell House

Location: Approx. 25 minutes to LSI London Central, approx. 30 minutes to LSI London Hampstead by public transport. Nearest station: Tufnell Park (zone 2).

Minimum age: 18

Rooms: En-suite rooms

Private Bathroom: Yes

Meals: Self-catering

Facilities: Shared kitchen, on-site gym, games room, lounge areas with Sky TV and special study spaces, on-site laundry, bike storage

Video: <https://www.youtube.com/watch?v=XHUFrxJWmO8>

Prices (per week per person): En-suite room: From GBP310

Availability: Year-round

Other: Bed linen provided, towels not provided. Kitchens cleaned every Saturday morning but dishes need to be cleaned by the students. LSI student placements managed by an external agency. Minimum stay 4 weeks. Bookings with departure dates in October, November and December not accepted.

Cancellation policy: Free cancellation up to 5 weeks before the arrival date.



Fulham Palace Studios

Location: Approx. 45 minutes to LSI London Central by public transport. Nearest station: Hammersmith (zone 2).

Minimum age: 18

Rooms: Single and twin studios

Private Bathroom: Yes

Meals: Self-catering

Facilities: Free Wi-Fi, TV Room, kitchenette in room with mini oven, launderette on-site, bicycle storage

Video: <https://www.youtube.com/watch?v=UWBxlvSkvbs>

Prices (per week per person): Single studio: From GBP330; Twin studio: From GBP398

Availability: Year-round

Other: Bed linen provided, towels not provided, cleaning before checking in, kitchen pack provided. LSI student placements managed by an external agency. Minimum stay 1 week.

Cancellation policy: Free cancellation up to 3 weeks before the arrival date.



Rathbone Place Apartments

Location: Zone 1 on Oxford Street - 10 minute walk to LSI London Central - 30 minute from LSI London Hampstead.

Nearest station: Tottenham Court Road (zone 1).

Minimum age: 18

Rooms: Single and twin rooms (flats have 3-6 bedrooms)

Private Bathroom: No, shared bathrooms

Meals: Self-catering

Facilities: Shared kitchen, Wi-Fi

Prices (per week per person): Single room: Please enquire with the school about availability and prices.

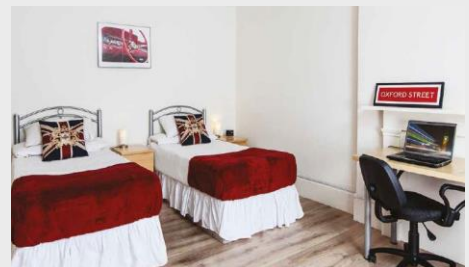
Economy twin room to share: From GBP265

Availability: Year-round

Other: Bookings with departure dates in October, November and December not accepted.

Bed linen and towels are provided and changed once a week on Saturdays. LSI student placements managed by an external agency. Minimum stay 4 weeks.

Cancellation policy: Free cancellation up to 5 weeks before the arrival date.



Residences & Flat share

Tottenham Hale House Share

Location: Approx. 30-35 minutes to LSI London Central and 40-45 minutes to LSI London Hampstead by public transport. Nearest station: Tottenham Hale (zone 3)

Minimum age: 18

Rooms: Single and shared rooms in furnished flats of 4 – 8 people

Private Bathroom: No, shared bathroom

Meals: Self-catering

Facilities: Shared kitchen, laundry facilities. Common areas are serviced every 2 weeks.

Prices (per week per person): Single room: From GBP205; Twin room: From GBP155

Availability: Year-round

Other: Bookings with departure dates in October, November and December not accepted.

Bed linen provided but not towels. Cleaning of the common areas is provided once a week. LSI student placements managed by an external agency. Minimum stay 4 weeks.

Cancellation policy: Free cancellation up to 5 weeks before the arrival date.



Canada Water House Share

Location: Approx. 20-30 min travel to LSI Central and 40-50 min travel to LSI Hampstead. A, depending on the exact location, which is confirmed 1 week before arrival.

Minimum age: 18

Rooms: Single and twin rooms in flats of up to 6 people

Private Bathroom: Shared facilities and en-suite available

Meals: Self-catering

Facilities: Shared kitchen, living room, communal areas with internet and TV, laundry facilities

Prices (per week per person): Single room: From GBP255;

Twin room: from GBP225; Single room with private bathroom: From GBP275

Availability: Year-round

Other: Communal areas cleaned once weekly.

LSI student placements managed by an external agency. Minimum stay 1 week

Cancellation policy: Free cancellation up to 5 weeks before the arrival date.



Hawley Crescent

Location: Approx. 20 minutes to LSI London Central and London Hampstead by public transport. Nearest station: Camden Town (zone 2)

Minimum age: 18

Rooms: Studios

Private Bathroom: Yes

Meals: Self-catering

Facilities: Free Wi-Fi, kitchenette, SKY TV in lounge, bicycle storage

Video: <https://www.youtube.com/watch?v=WybL0djooTI>

Prices (per week per person): Single room: From GBP415;

Double room: From GBP220

Availability: Year-round

Other: Bed linen provided, towels not provided, cleaning before checking in, kitchen pack provided. LSI student placements managed by an external agency. Minimum stay 1 week.

Cancellation policy: Free cancellation up to 3 weeks before the arrival date.



Residences & Flat share

International Hall

Location: Approx. 35-50 minutes to LSI London Hampstead a 13 minute walk to LSI Central. Nearest station: Russel Square (zone 1)

Minimum age: 18 (16 when accompanied with a guardian)

Rooms: Single rooms

Private Bathroom: No, shared bathrooms

Meals: Hot English breakfast included daily (evening meal available for purchase)

Facilities: Wi-Fi, common room, TV room, study room, music room, bike storage, laundry facilities

Video: <https://vimeo.com/157652215>

Prices (per week per person): Single room: From GBP319

Availability: 20th June to 30th August

Other: Bed linen and towels provided, cleaning every two weeks. LSI student placements managed by an external agency.

Cancellation policy: Free cancellation up to 5 weeks before the arrival date.

No refund for curtailment of stay after arrival or no show.

